



SAINT LUCIA ENHANCED TRAVEL SAFETY PROTOCOLS

Saving Lives and Livelihoods

ALWAYS REMEMBER THROUGHOUT YOUR STAY:

- Keep your distance
- Wash or sanitize your hands regularly throughout the day
- Wear a mask in public spaces

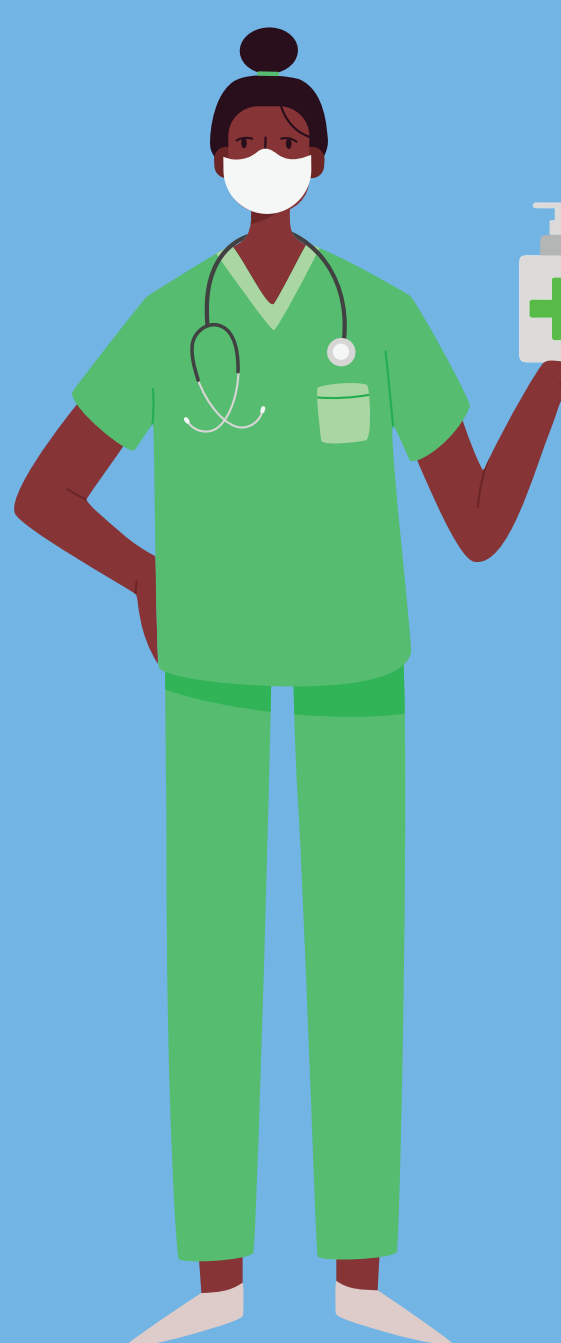


Government of Saint Lucia

SAINT LUCIA
LET HER INSPIRE YOU

1 BEFORE YOU TRAVEL-ALL ARRIVALS

- Complete and submit your travel registration form as early as possible online at www.stlucia.org/covid-19
- Take a PCR test and receive a negative result. You must test 5 days or less before you travel to Saint Lucia
Upload the test result to your travel registration
- Receive your travel authorisation by email
- PRINT and travel with your Travel Authorisation and vaccination record, if fully vaccinated
- Complete Health Screening Form and Immigration Card on the day of travel, before arrival in Saint Lucia
- To check the status of your registration email tic@stlucia.org



2 AT THE ARRIVAL AIRPORT

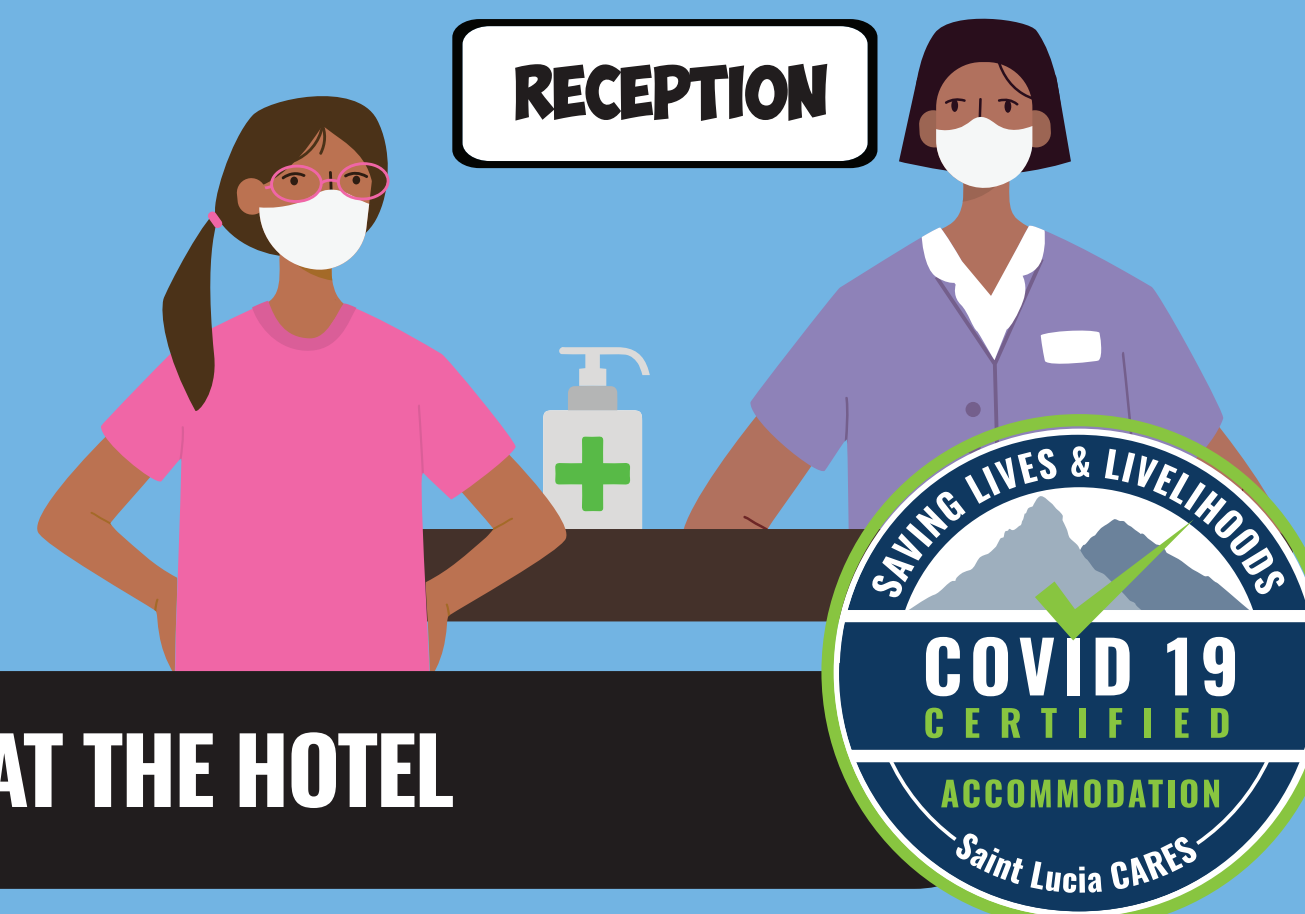
- Follow the directions of the ground staff, Port Health Team and signage
- Present your Travel Authorisation Letter and Health Screening Form
- Health screening (including temperature checks)
- Once health screening is complete, proceed to immigration and customs
- Vaccinated passengers will be issued with a wristband while at the airport, which must be worn throughout your stay and removed only on departure
- Use certified transportation providers only

3 AT THE HOTEL

- COVID-19 Certified Accommodation only
- You may split your stay in up to 2 COVID-19 certified properties
- Limited contact for check in and check out
- Temperature checks for guests throughout their stay
- Masks are not required at the beach, at the pool and in restaurants once you are seated
- Guests are required to remain at their hotel or villa, however they can also enjoy a variety of COVID-19 certified tours, activities and dining
(For fully vaccinated travellers, see section 4)

You can also expect:

- Regular temperature checks for staff
- Regular sanitization of surfaces
- Increased sanitization in rooms



4 FULLY VACCINATED VISITORS

- Fully vaccinated visitors have expanded access on the island
- Proof of vaccination must be available to show at the airport
- Vaccinated passengers will be issued with a wristband while at the airport, which must be worn throughout your stay and removed only on departure
- Fully vaccinated means a passenger has surpassed a two week period after the second dose of the two-shot vaccine or two weeks after a single-dose vaccine

5 DEPARTURE TESTING

- There are lots of options for travelers who must provide proof of a COVID-19 test on arrival in the US, UK and Canada
- Many hotels offer convenient on-site and complimentary testing, or can assist with arrangements for guests
- Please contact your accommodation provider for options and scheduling information

6 DEPARTURE AIRPORT

- Only departing guests will be allowed into the airport
- Keep your passport bio-page and flight details within easy reach
- Remember to present your negative test result on check-in if required



For the latest information visit stlucia.org/covid-19